

ENVIRONMENT VOCABULARY

Guessing

คำศัพท์เกี่ยวกับสิ่งแวดล้อม

El vocabulario del
medio ambiente

पर्यावरण शब्दावली

環境用語

环境词汇

환경관련 어휘

Praenuan (Mayom) Limvattanakul

Translated by: Preeti Tandon (Japanese),

Navya Singhal (Hindi & Spanish),

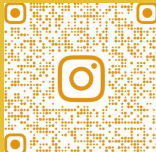
Baifu Zhang (Chinese), Yoochan Hwang (Korean),

Vachiravich (Turbo) Phantratanamongkol (Thai)



@brightly_beaming

www.brighterfuture.live/brightly_beaming.html



ENVIRONMENT VOCABULARY

Guessing

環境用語

पर्यावरण शब्दावली

คำศัพท์เกี่ยวกับสิ่งแวดล้อม

El vocabulario del medio ambiente

环境词汇

환경관련 어휘

Author

Praenuan Limvattanakul

Contributing Editors

Preeti Tandon

Navya Singhal

Baifu Zhang

Yoochan Hwang

Vachiravich Phantratanamongkol

The activity pages provided on this website and in this activity book are intended for children to complete with adult supervision.

The author and publisher disclaim any liability incurred from the use or application of the contents of this book.

Copyright©2024 Praenuan Limvattanakul

Published by Brightly Beaming

Bangkok Patana School

643 La Salle Road (Sukhumvit 105),

Bangna Tai, Bangna, Bangkok 10260 Thailand

All rights reserved. No part of this publication may be reproduced without the prior permission of both the copyright owner and the publisher of this book.



— — r — —



Earth

ໂລກ

地球

La Tierra

धरती

地球

지구

W _ _ _ l _ _ e



Wildlife



វត្តភ័យ
野生生物
La fauna
वन्यजीव
野生动物
야생 동물

F _ _ _ S _



Forest

ᄇᆞᆫ 森林

El bosque

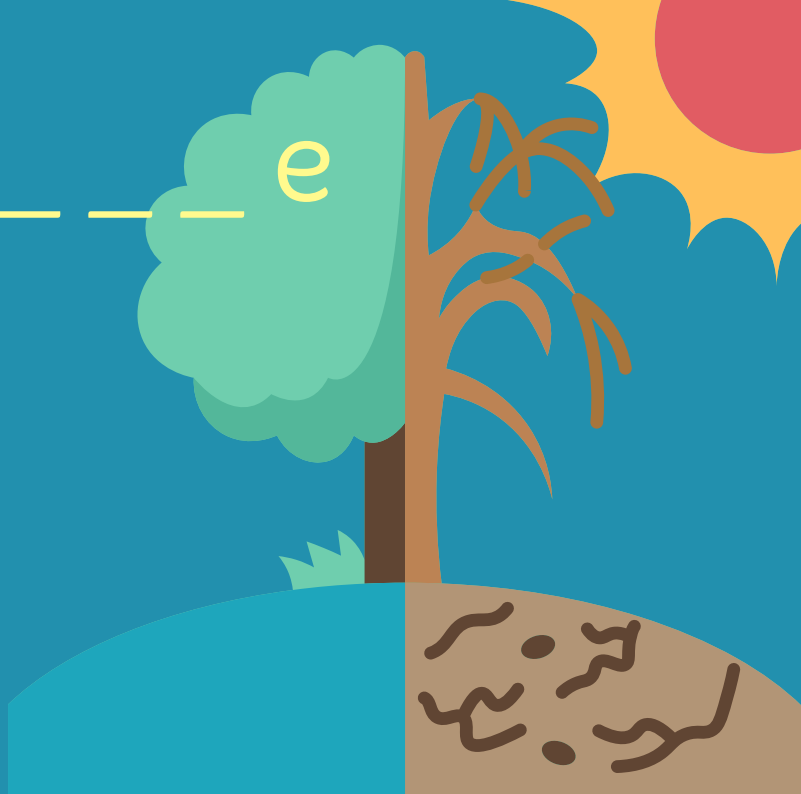
जंगल

森林

숲



C _ i _ _ _ e



Climate

ภูมิอากาศ

氣候

El clima

जलवायु

气候

기후



R _ _ _ _ l _ _ _

_ i _



Recycling bin



ถังขยะรีไซเคิล
リサイクル箱
La papelera de
reciclaje
रीसाइक्लिंग बिन
回收箱
재활용 쓰레기통

A _ _ _ t _ _ _



Arctic

A stylized illustration of an Arctic landscape. In the foreground, a large, flat expanse of white snow or ice is shown. In the middle ground, a circular hole in the ice reveals a deep blue body of water. A small, white, jagged ice floe floats in the center of this hole. In the background, a large, dark blue mountain peak rises against a lighter blue sky. The overall style is clean and modern, using a limited color palette of blues, whites, and greys.

ทวีปอาร์กติก

北極

El ártico

आर्कटिक

北极

북극

P _ _ _ _ t _ _ _ _



Pollution



પાવૈય

汚染 प्रदूषण

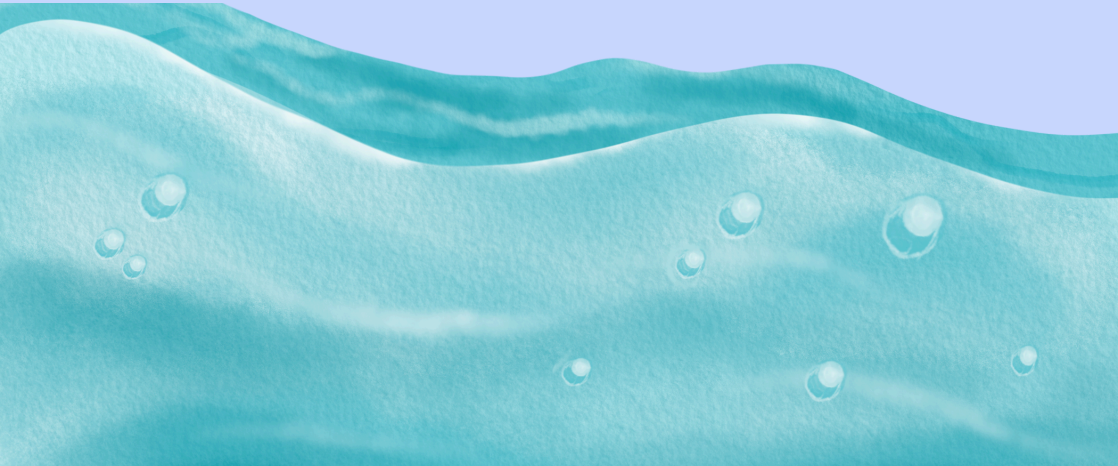
La

contaminación

汚染

오염

O _ _ _ _



Ocean

οκεανος

海洋

El océano

महासागर

海洋

바다

G _ _ _ _ _ O _ _ _ _ _



Greenhouse

เรือนกระจกสำหรับ
เพาะปลูกพืช

温室

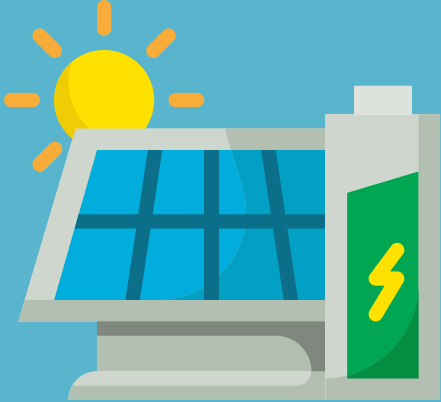
El invernadero

ग्रीन हाउस

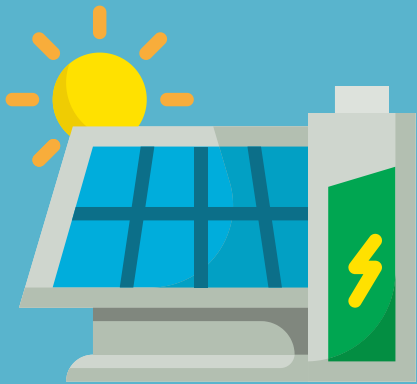
温室

온실





R _ _ _ _ _ b _ _ _
e _ _ _ _ _



Renewable energy

พลังงานทดแทน

再生可能エネルギー

La energía renovable

नवीकरणीय ऊर्जा

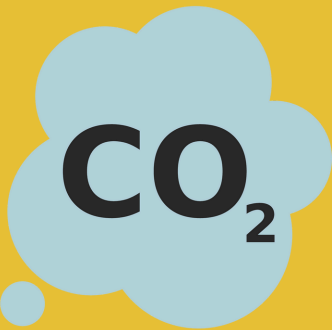
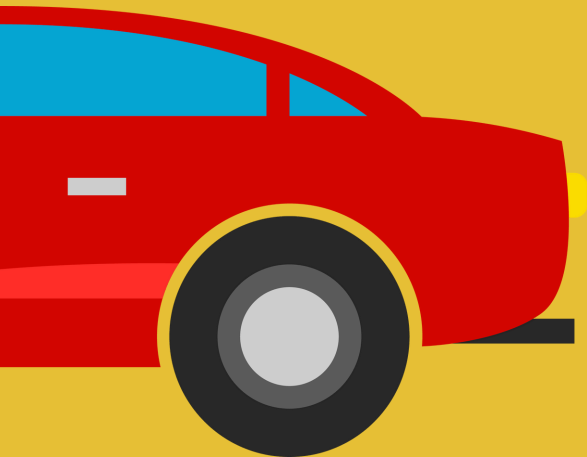
可再生能源

재생 에너지



C _ _ _ _ _

d _ _ _ _ _



Carbon dioxide

ก๊าซคาร์บอนไดออกไซด์

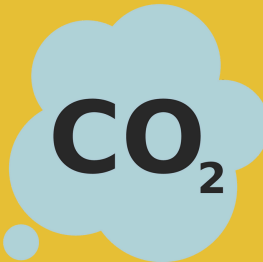
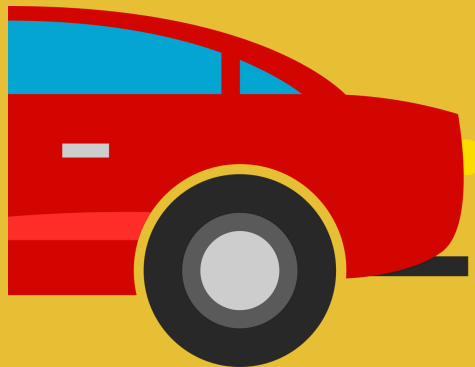
二酸化炭素

El dióxido de carbono

कार्बन डाईऑक्साइड

二氧化碳

이산화탄소



D r a n

No



Deforestation



การตัดไม้ทำลายป่า
森林伐採
La deforestación
वनों की कटाई
森林砍伐
삼림벌채

L _ _ _ _ r _ _ _ _





Littering

การทิ้งขยะเคลื่อนกลาดไม่ถูกที่

ごみ捨て

Los residuos

बरबाद करना

乱扔垃圾

쓰레기 투기

Dr _ u _ _ t



Drought

ความแห้งแล้ง

La sequía

干ばつ सूखा

干旱

가뭄



Waste

પચ: 廢棄物

La basura

बरबाद करना

废物

쓰레기





@brightly_beaming

www.brighterfuture.live/brightly_beaming.html

