

# Marine life & **SUSTAINABILITY** **VOCABULARY**

**VIE MARINE ET SOUTENABILITÉ VOCABULAIRE**

**VOCABULARIO DE VIDA MARINA Y SOSTENIBILIDAD**

**Praenuan Limvattanakul**

**Edited by: Romerawin Suntaranond & Charisa Howe**

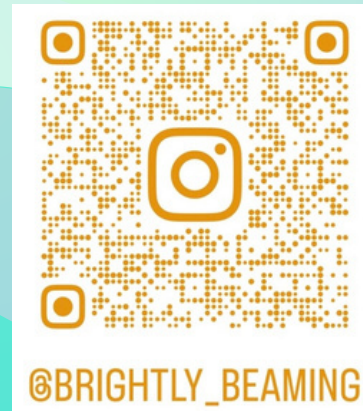
**Translated by Cheyenne Yeung (French), Alexander S Morrissey (Spanish)**





**@brightly\_beaming**

**[www.brighterfuture.live/brightly\\_beaming.html](http://www.brighterfuture.live/brightly_beaming.html)**



Author

Praenuan Limvattanakul

Contributing Editors:

Romerawin Suntaranond

Charisa Howe

Cheyenne Yeung

Alexander S Morrissey

The flashcards provided in this publication and on this website are intended for children to use with adult supervision.

The authors and publisher disclaim any liability incurred from the use or application of these flashcards.

Copyright ©2026 Praenuan Limvattanakul

All rights reserved. No part of this publication or its flashcards may be reproduced without the prior permission of both the copyright owner and the publisher of these flashcards.

Published by Brightly Beaming

Bangkok Patana School

643 La Salle Road (Sukhumvit 105),

Bangna Tai, Bangna, Bangkok 10260 Thailand

## COLOR CODING:

SUNLIGHT ZONE - EASY

TWILIGHT ZONE - MEDIUM

MIDNIGHT ZONE - **DIFFICULT**

ABYSS - **VERY DIFFICULT**

## CODE COULEUR:

ZONE ENSOLEILLÉE - FACILE

ZONE CRÉPUSCULAIRE MOYEN

ZONE NOCTURNE - **DIFFICILE**

ZONE ABYSSALE - **TRÈS DIFFICILE**

## CODIFICACIÓN POR COLORES

LA ZONA LUMINOSA - FÁCIL

LA ZONA CREPUSCULAR - MEDIO

LA ZONA DE MEDIANOCHE - **DIFÍCIL**

LA ZONA ABISAL - **MUY DIFÍCIL**






Sunlight zone

ZONE ENSOLEILLÉE

LA ZONA LUMINOSA







# Rubbish

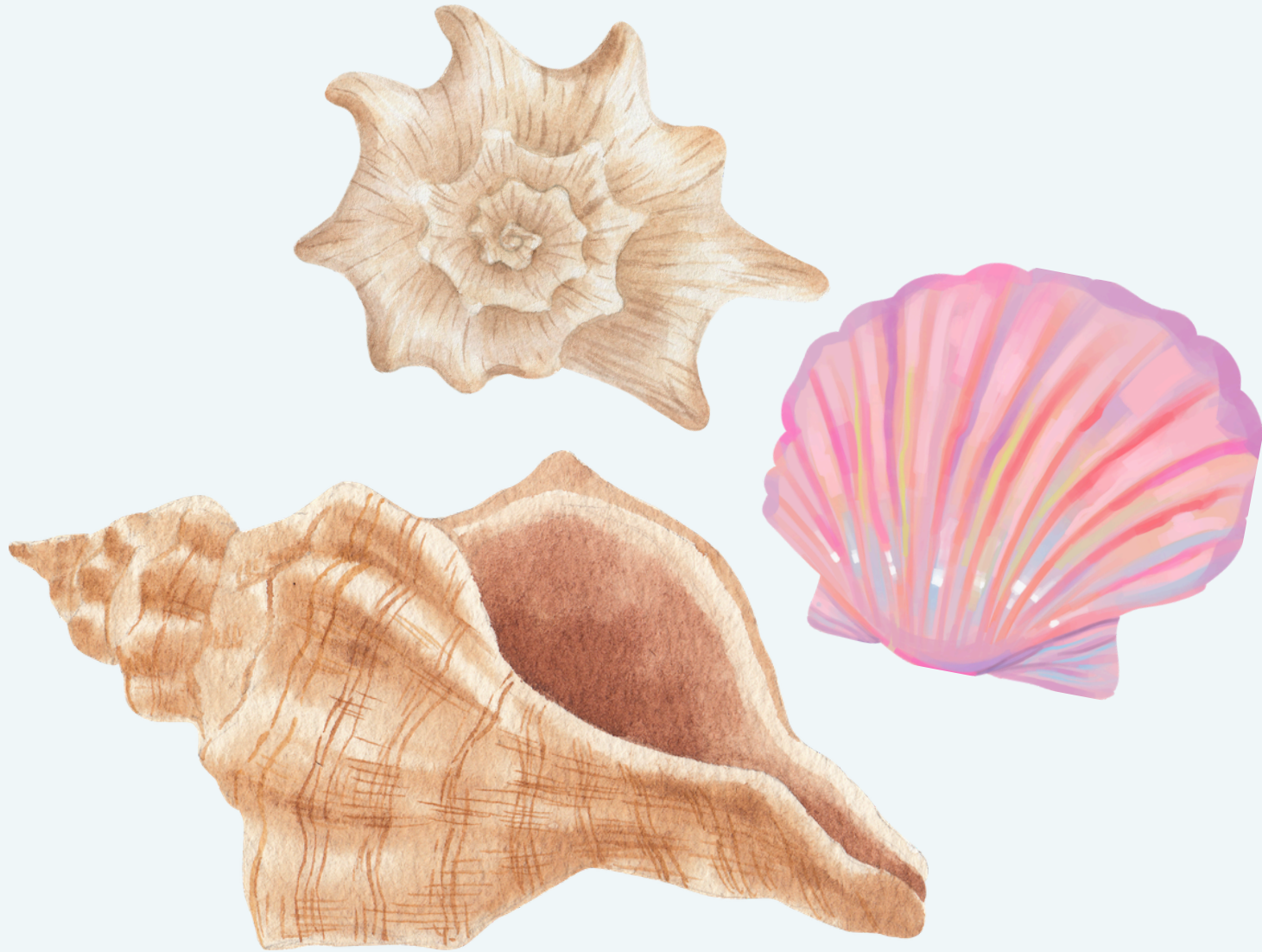
LES DÉCHETS  
LA BASURA




A watercolor illustration of coral reefs in various colors (red, green, blue, yellow) framing the central text. The coral is depicted with soft, blended colors and delicate, branching structures. The background is a light, pale blue gradient.

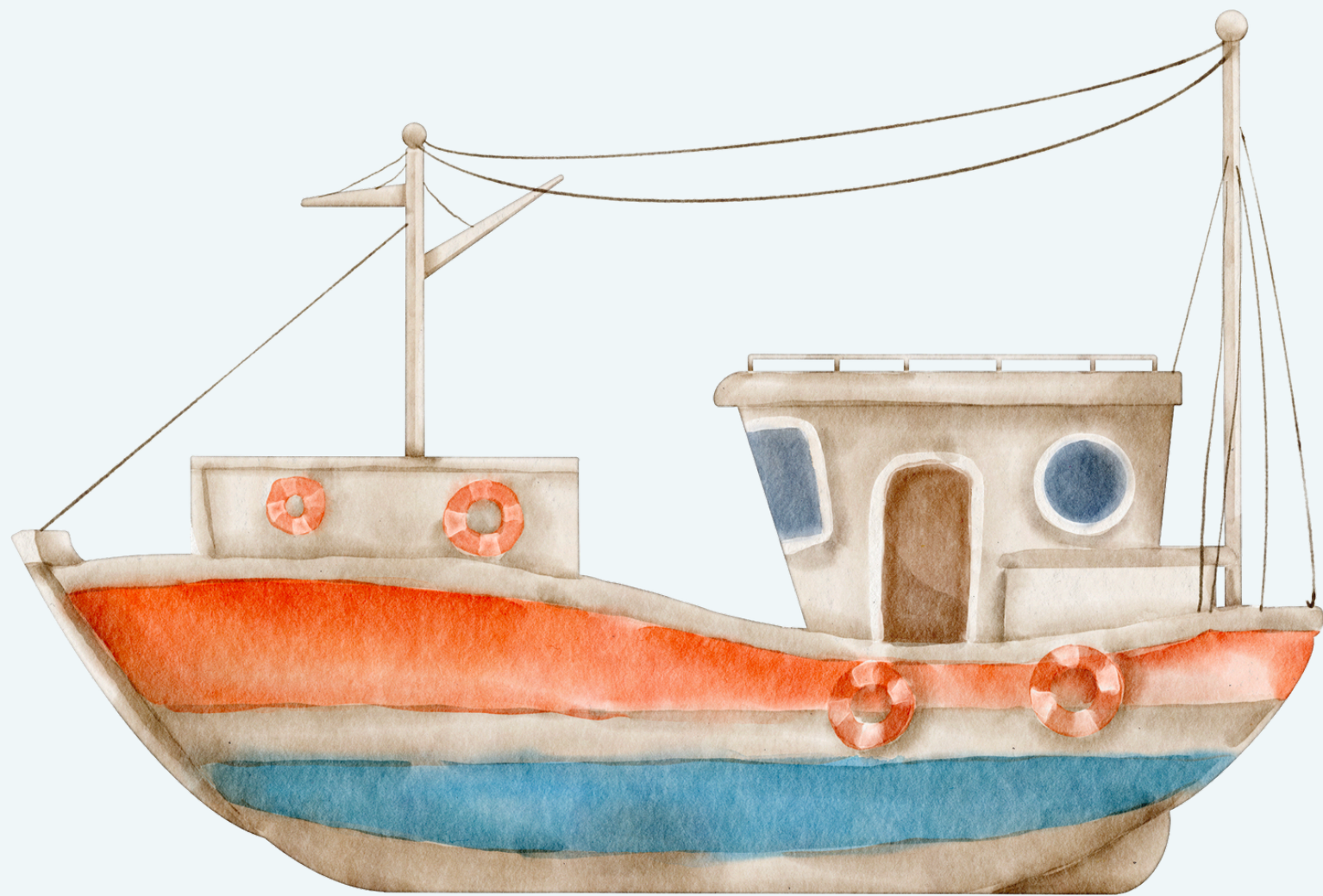
**Coral**

**Les coraux**  
**El coral**



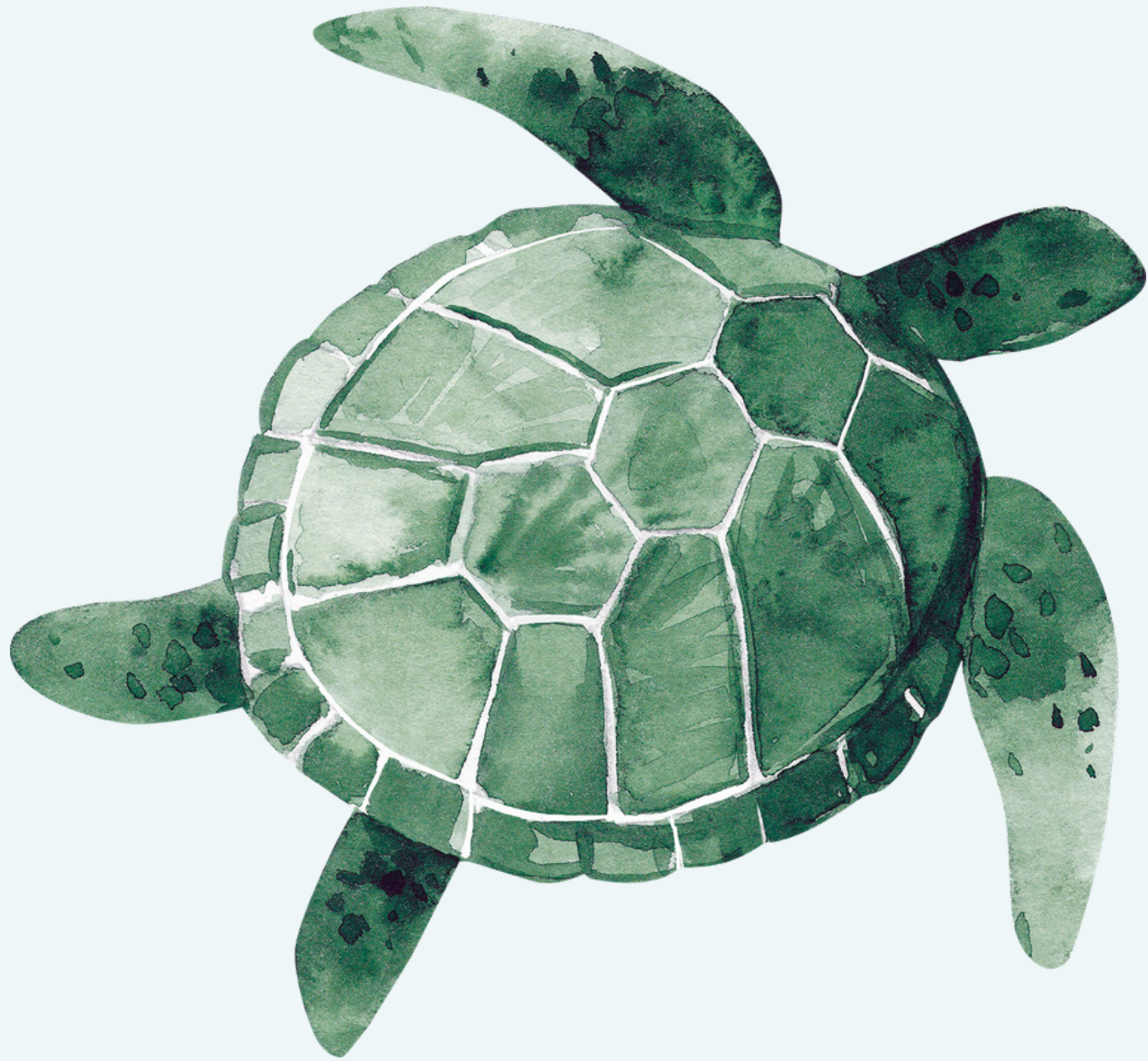


Seashell  
Un coquillage  
La concha marina





**Fishing boat**  
**Le bateau de pêche**  
**El barco de pesca**





Sea Turtle  
Tortue de mer  
La tortuga marina





# Blue Whale

Une baleine bleue  
La ballena azul

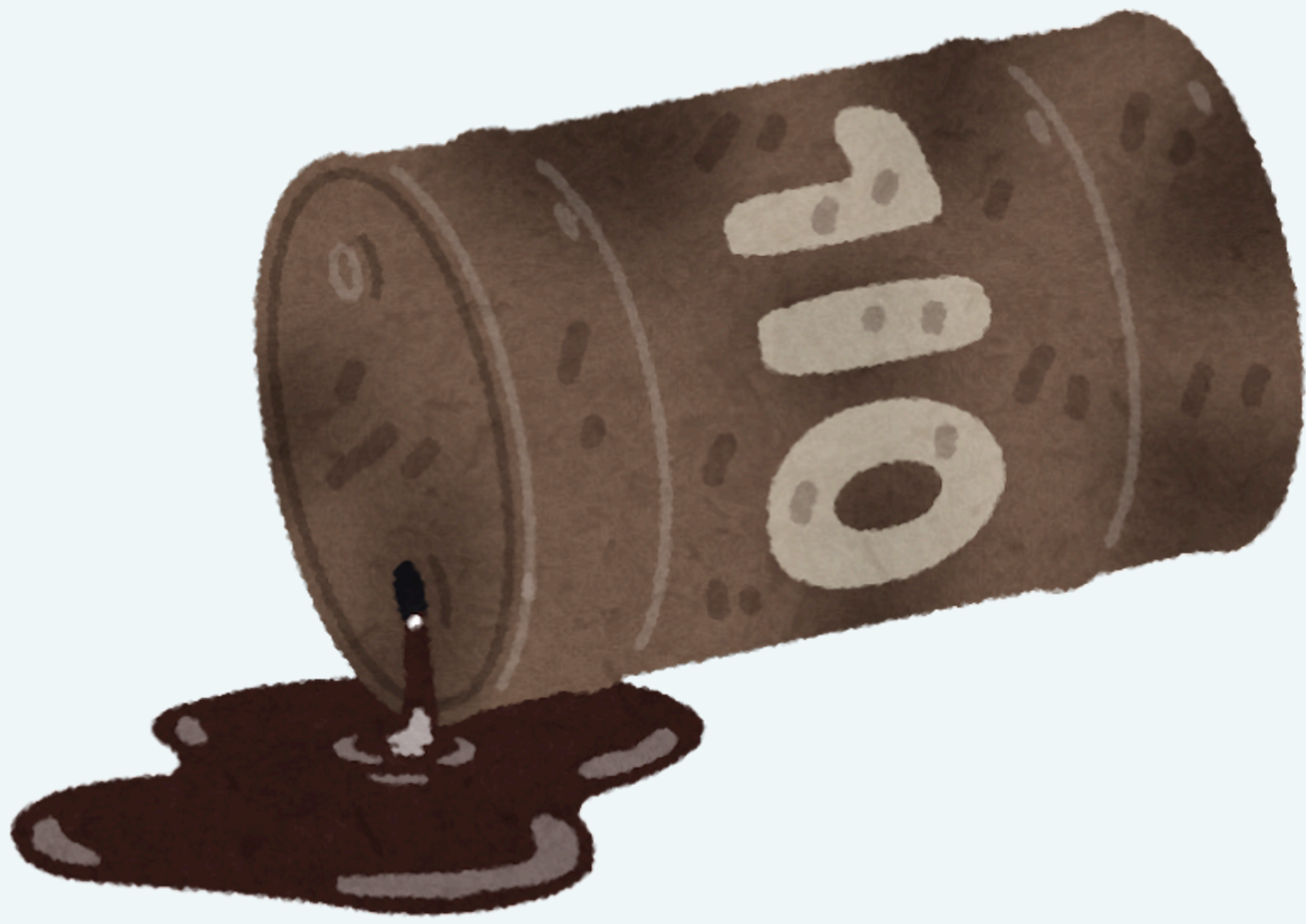


A decorative border at the bottom of the page features a watercolor illustration of various coral species in shades of red, orange, yellow, green, and blue. The corals are rendered with soft, blended colors and delicate outlines, creating a vibrant and naturalistic look.

# **Recycling**

## **Le recyclage**


## **El reciclaje**





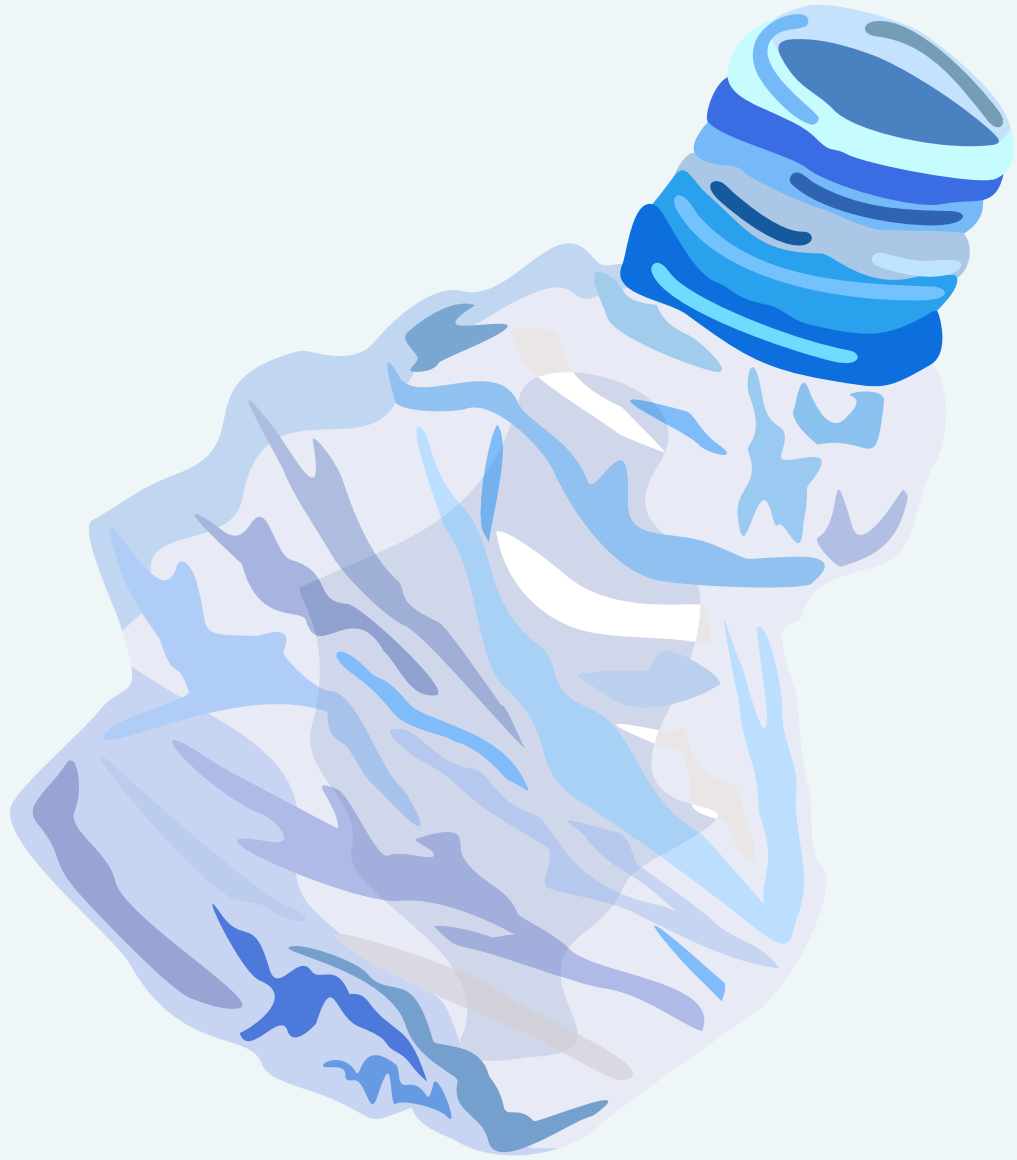
**Oil Barrel**  
**Baril de pétrole**  
**El barril de petróleo**





# Jellyfish

Une méduse  
La medusa





# Plastic bottle

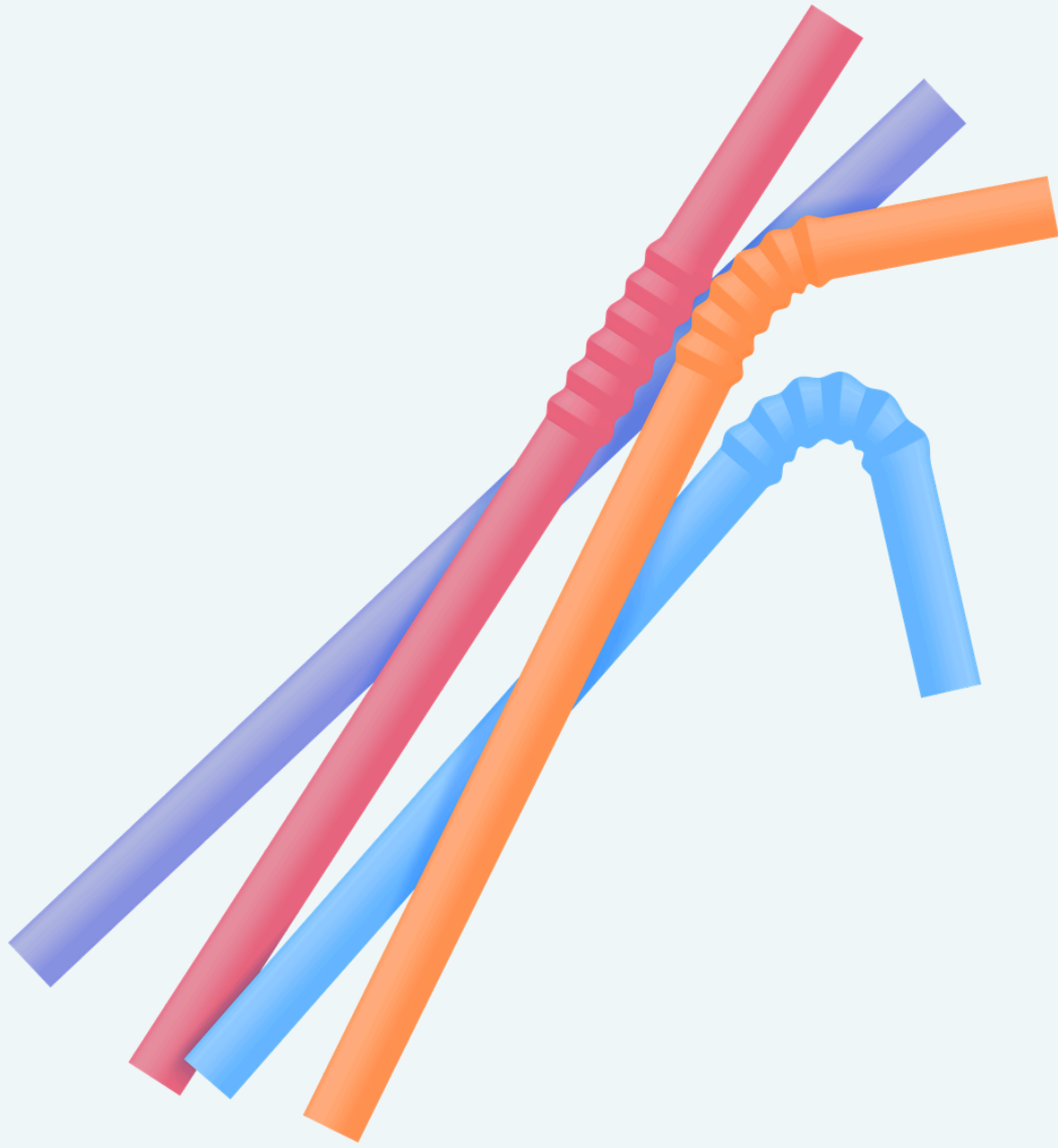
Bouteille en plastique  
La botella de plástico





# Plastic Bag

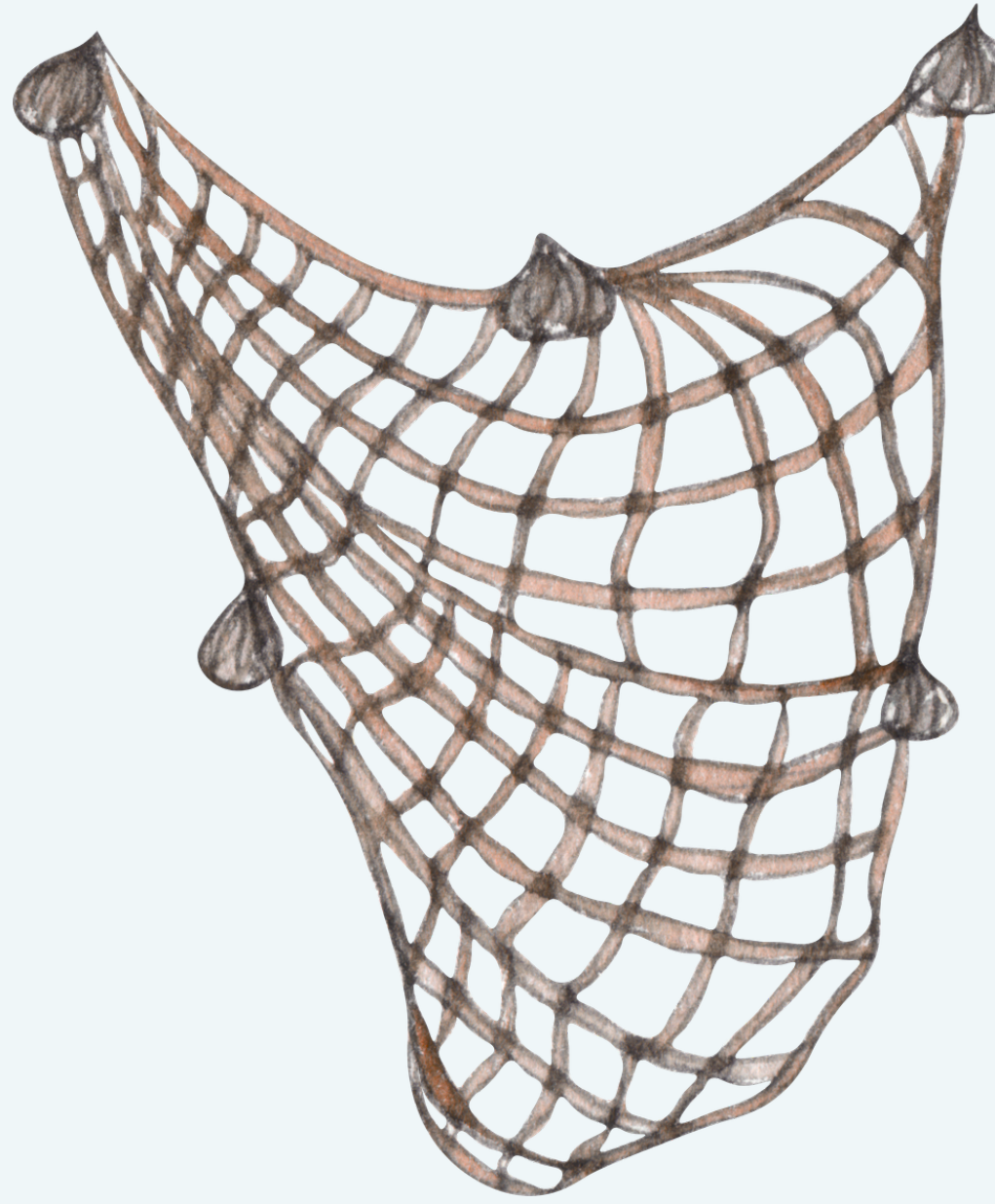
Sac en plastique  
La bolsa de plástico



A watercolor illustration of a coral reef, featuring various types of coral in shades of green, blue, and red, set against a light blue background. The coral is depicted with soft, blended colors and delicate brushstrokes, creating a vibrant and textured appearance. The reef is positioned at the bottom and sides of the page, framing the central text.

# Plastic Straws

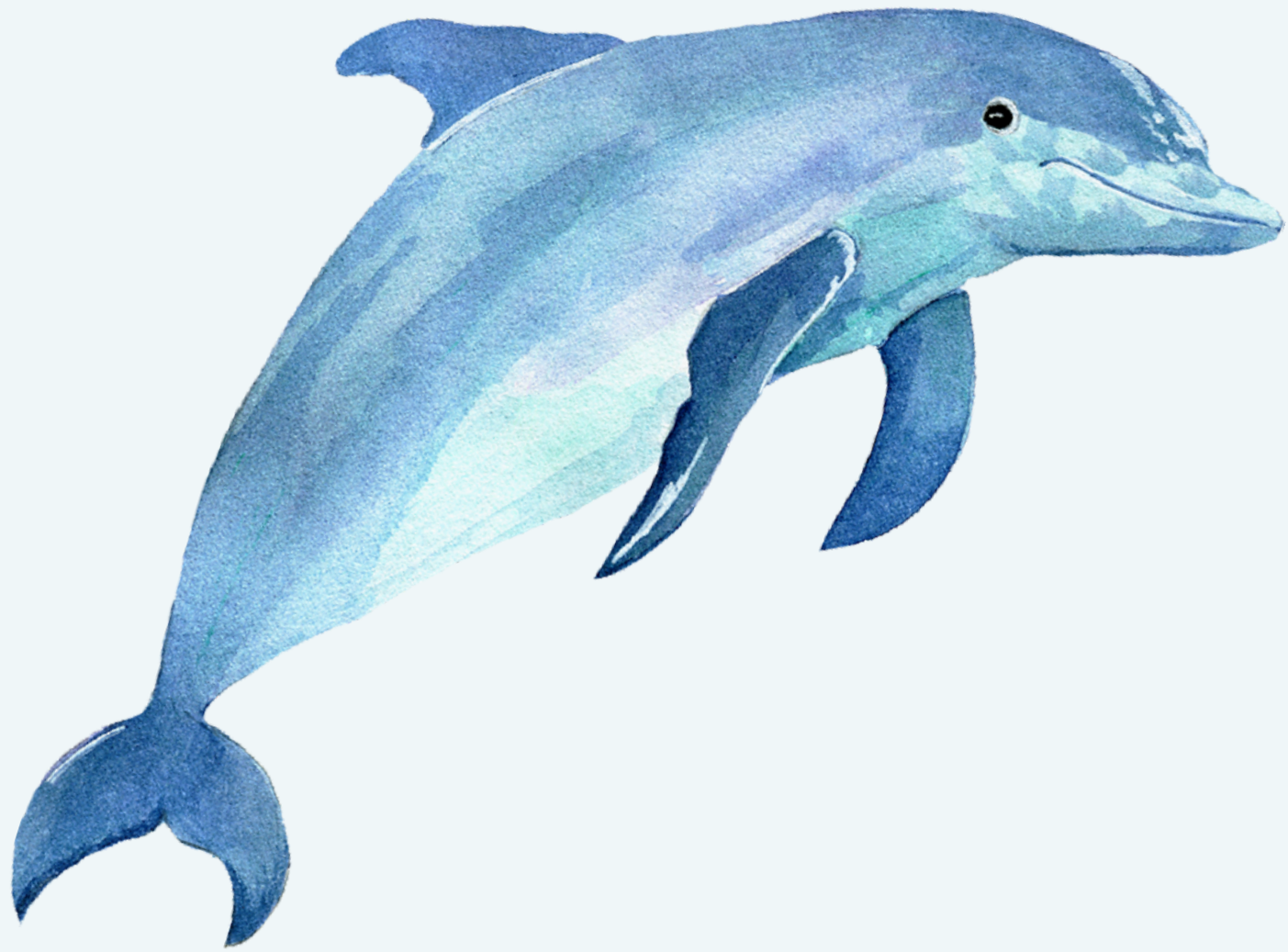
Pailles en plastique  
La pajita de plástico





# Fishing Net

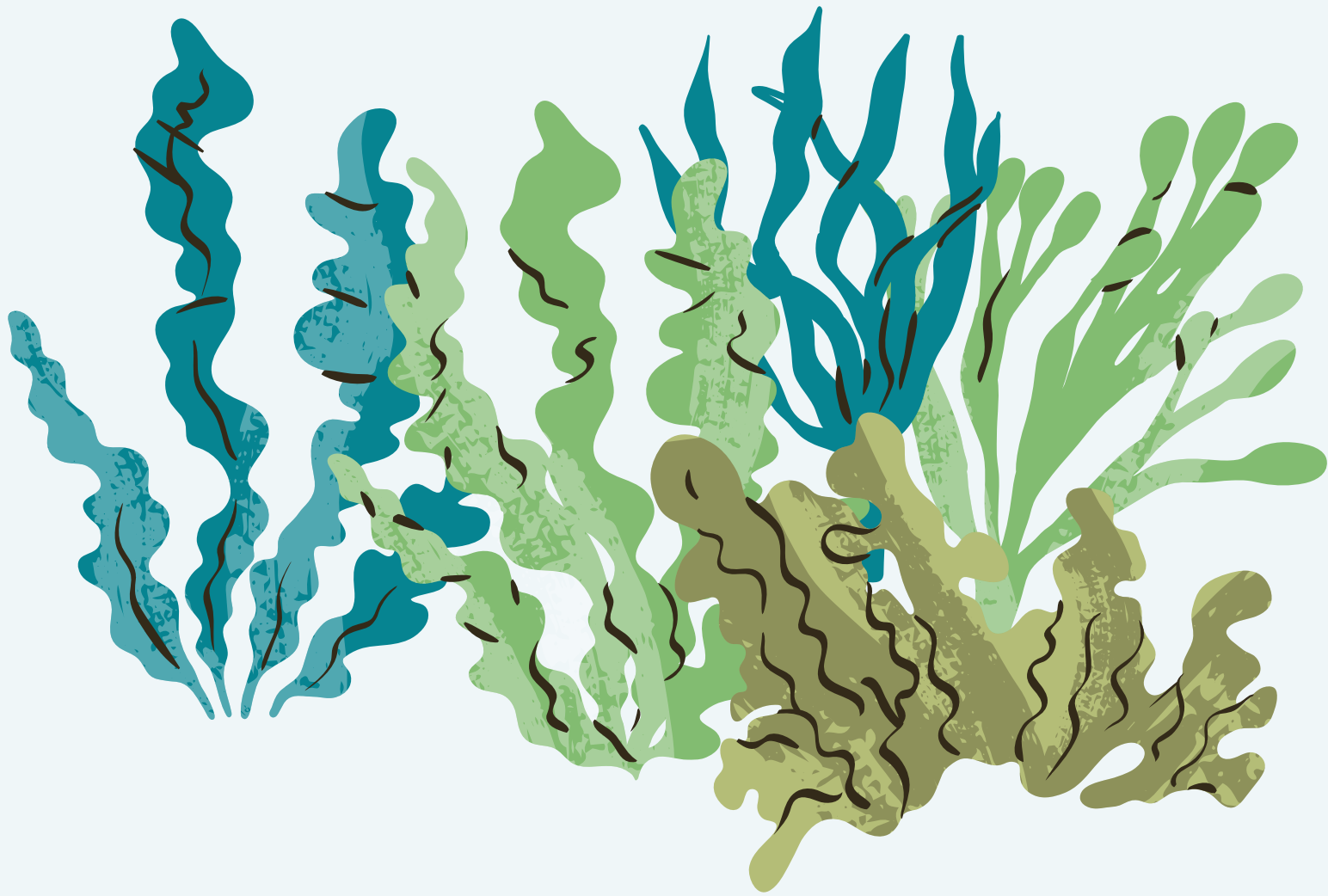
Filet de pêche  
La red de pesca



A watercolor illustration of a coral reef. The coral is rendered in various colors including shades of green, teal, blue, purple, orange, and red. The coral structures are branching and intricate, filling the bottom and sides of the frame. The background is a light, pale blue gradient.

# Dolphin

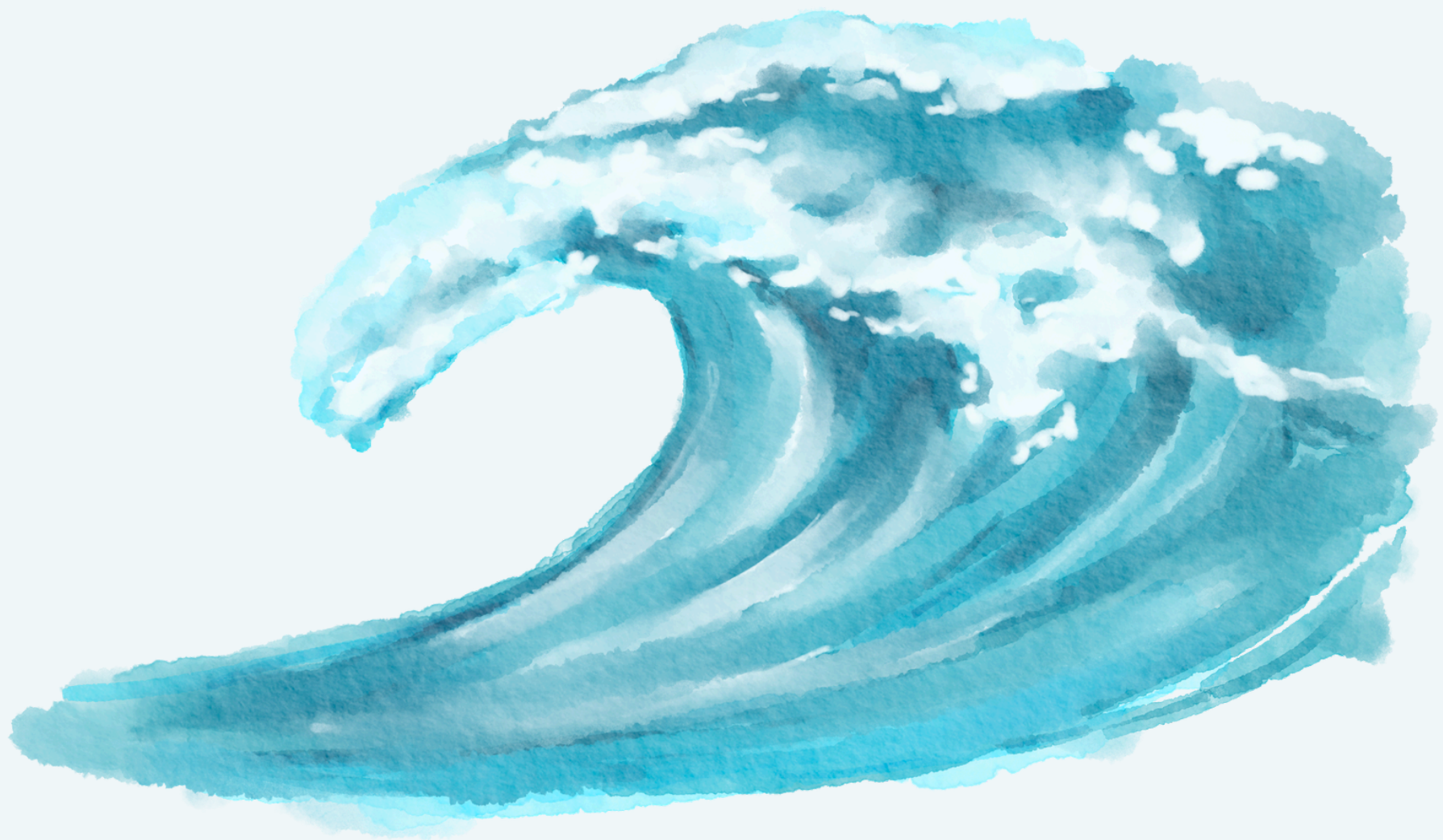
Un dauphin  
El delfín





# Seaweed


Les algues  
El alga marina



A watercolor illustration of a coral reef, featuring various types of coral in shades of green, blue, red, and orange, set against a light blue background. The coral is depicted with soft, blended colors and delicate brushstrokes, creating a vibrant and textured appearance. The reef is positioned at the bottom of the frame, with the coral branching upwards and outwards, framing the central text.

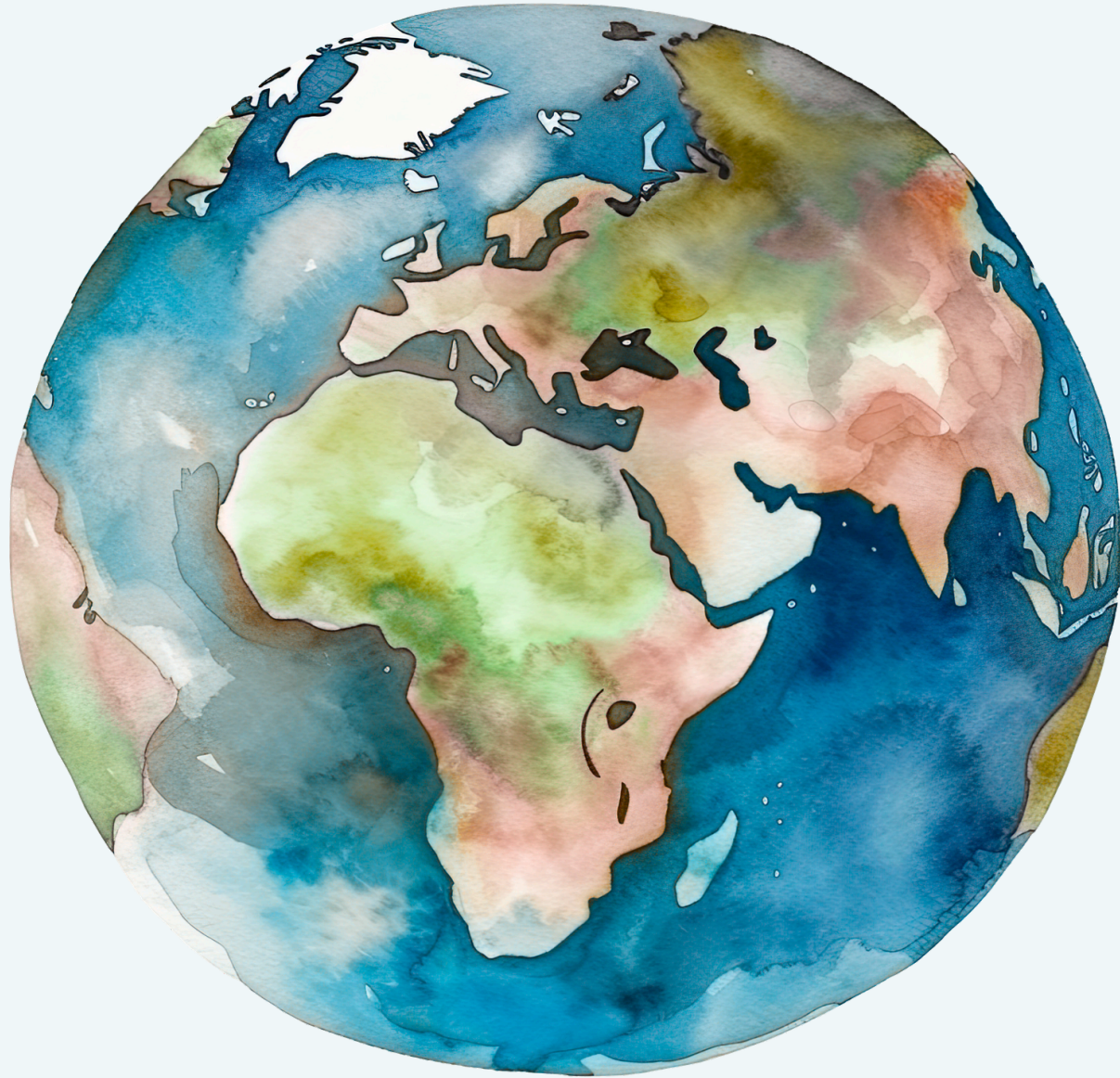
Ocean  
L'océan  
El océano



A watercolor illustration of a coral reef. The coral is rendered in various colors including shades of green, blue, purple, red, and orange. The reef is positioned along the bottom and sides of the page, framing the central text. The background is a light, pale blue gradient.

# Fishing

La pêche  
La pesca



Earth  
La terre  
La Tierra








# Fishes

Un poisson  
El pez / los peces






# Octopus

Un poulpe  
El pulpo



A decorative border of watercolor coral in various colors (red, green, blue, purple, orange) frames the bottom and sides of the page. The coral is rendered in a soft, painterly style with visible brushstrokes.

# Drinking water

L'eau potable  
El agua potable



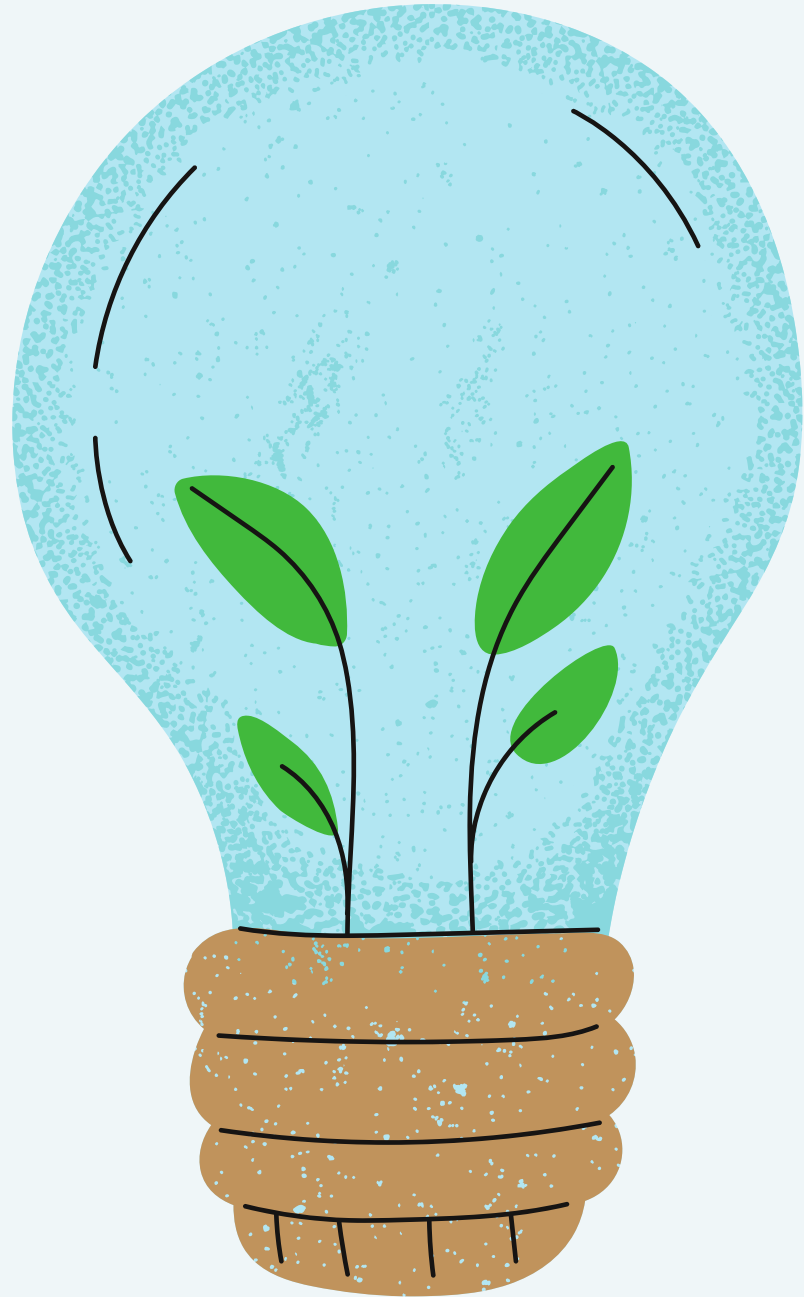


# Stingray

Une raie  
La raya venenosa

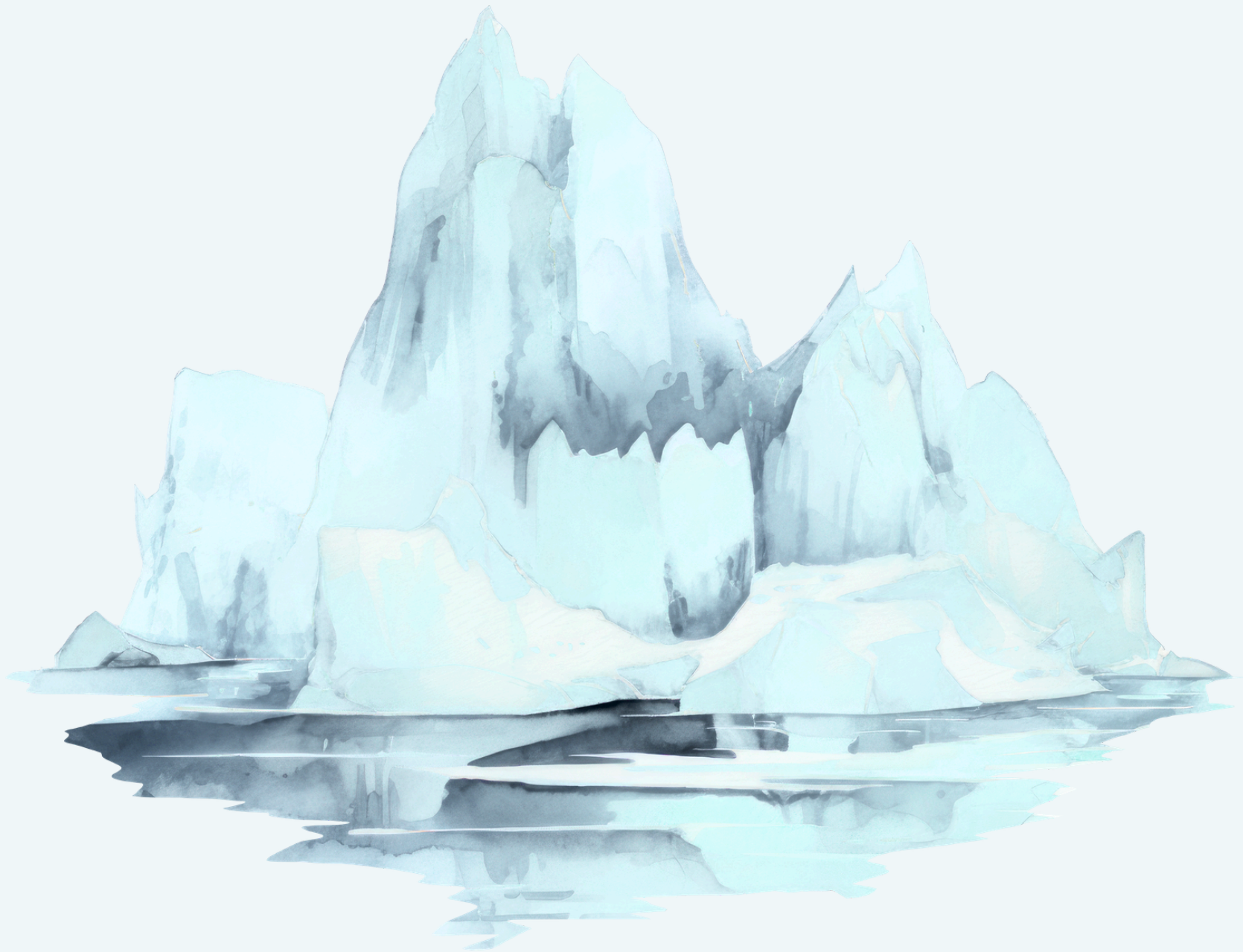
The background is a light blue gradient. In the upper left, a school of dark blue fish swims. On the right, a large, dark blue rock formation with white icicles hangs down. In the bottom left, another rock formation with icicles is visible. In the bottom center, a bright red crab is perched on a dark blue rock. The text is centered in the middle of the image.

**Twilight Zone**  
**Zone Crépusculaire**  
**La zona crepuscular**





**Conservation**  
**Conservation**  
**La conservación**



The background features a stylized, low-poly illustration of icebergs and glaciers in various shades of blue. The icebergs are depicted with sharp, angular shapes and some icicles hanging from their edges. The overall aesthetic is clean and modern, with a monochromatic color palette.

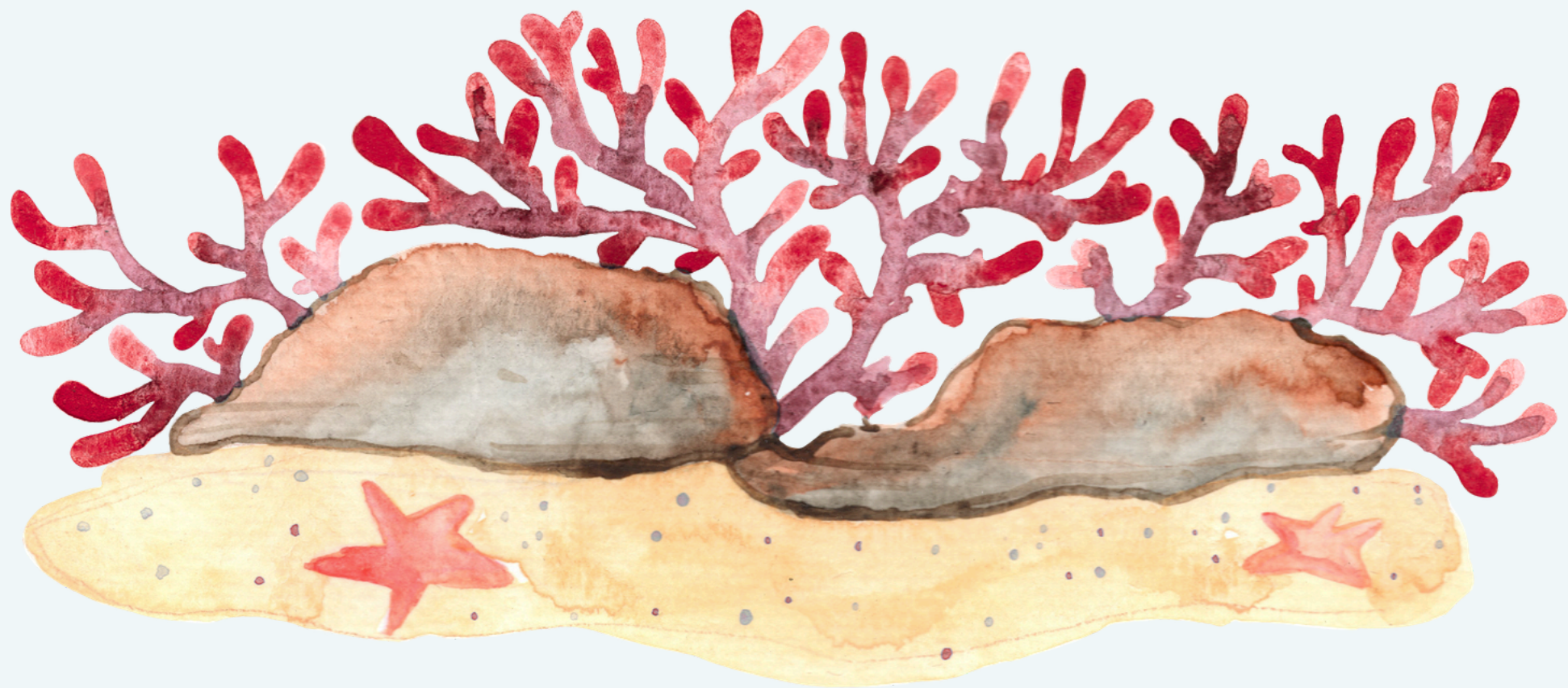
# Ice Glaciers

Les glaciers  
Los glaciares



The background features a stylized, low-poly illustration of a dam and surrounding rocky terrain. The color palette is monochromatic, using various shades of blue and teal. The dam structure is visible on the right side, with water flowing through its spillways. The rocky outcrops are depicted with sharp, angular shapes and some icicles hanging from their edges, suggesting a cold environment. The overall aesthetic is clean and modern.


**Water Dam**  
Un barrage  
La presa de agua



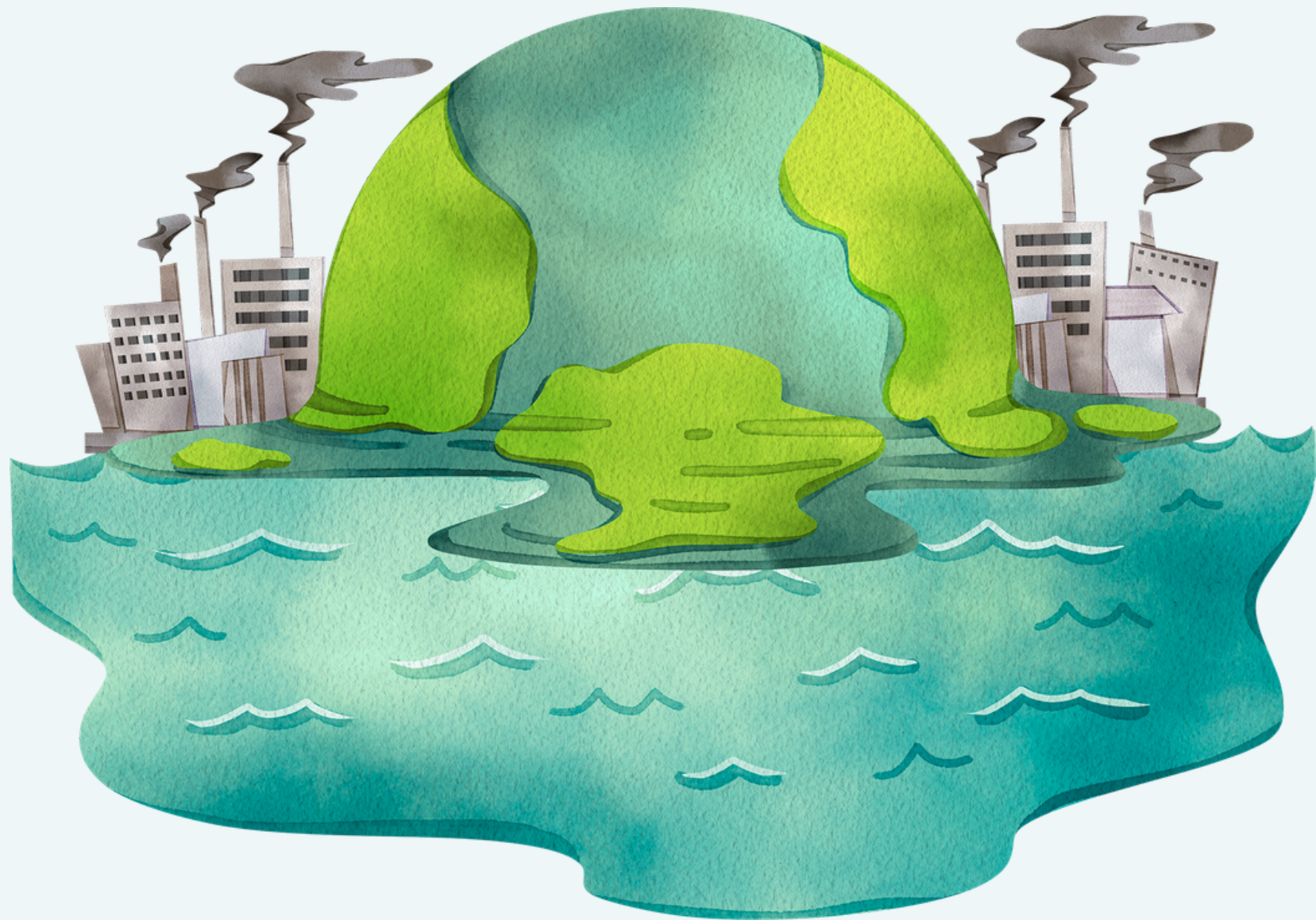


Habitat  
L'habitat  
El hábitat






**Climate change**  
**Changement Climatique**  
**El cambio climático**





**Pollution**  
La **pollution**  
La **contaminación**

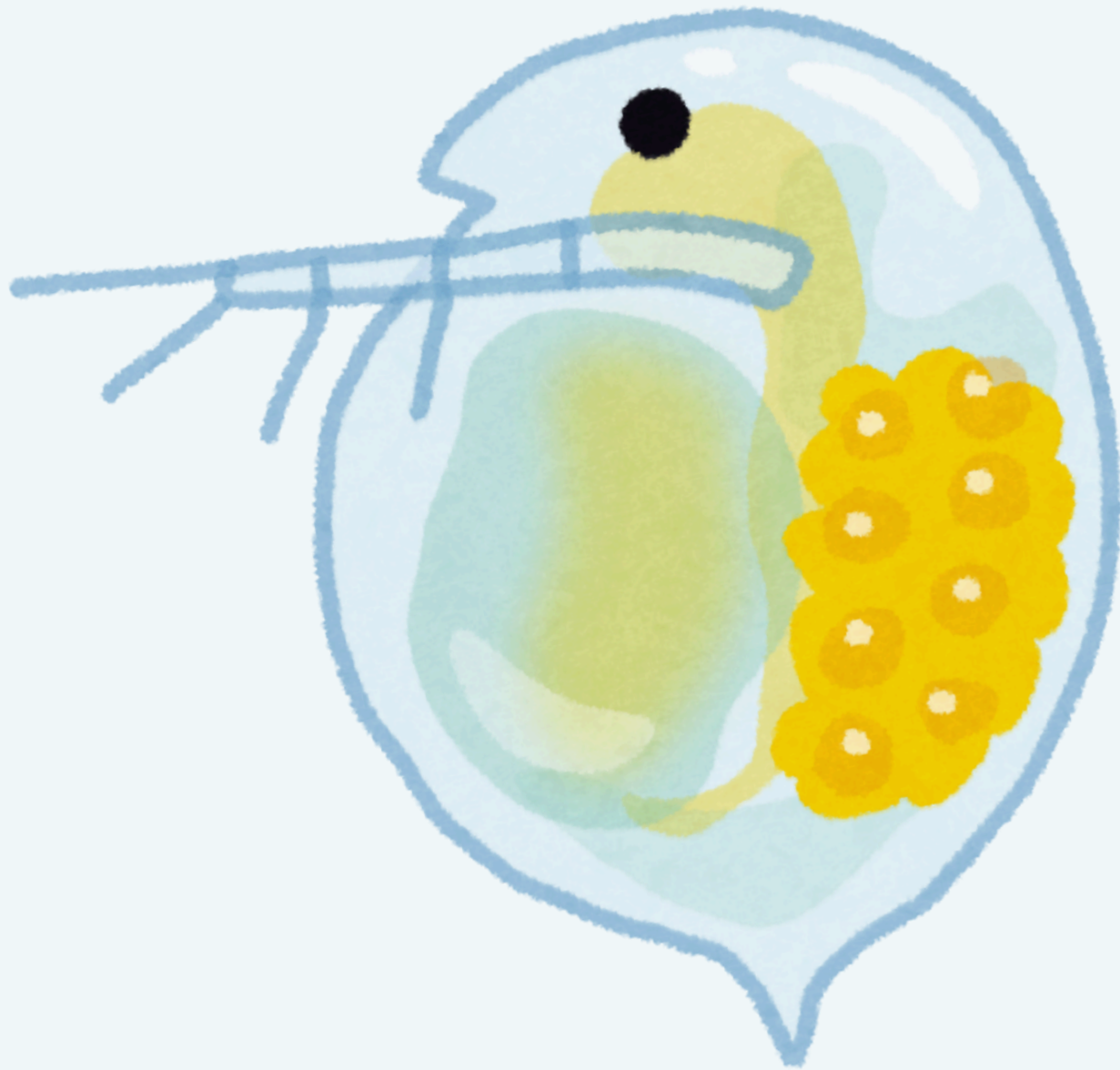




**Algae**  
**Les algues**  
**El alga**

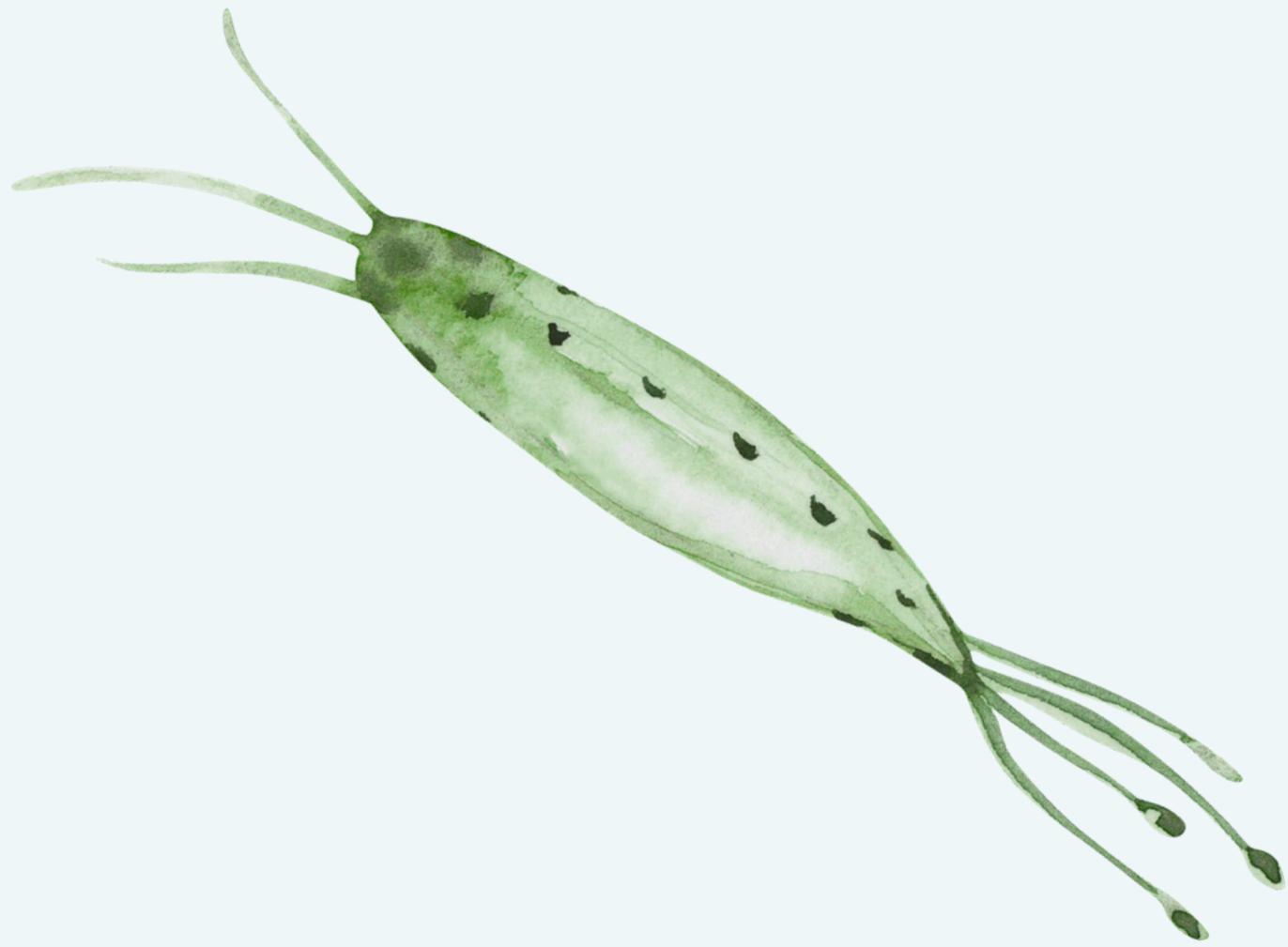


**Midnight Zone**  
**Zone Nocturne**  
**La zona de medianoche**





**Zooplankton**  
Zooplancton  
El zooplancton



The background is a dark blue gradient with stylized, layered shapes representing water or light rays. In the upper center, a black silhouette of an anglerfish is shown with its mouth open, revealing sharp teeth. A bright, multi-pointed starburst light emanates from the fish's glowing lure. In the upper left, there are several dark, vertical, pointed shapes resembling icicles or stalactites. In the lower right, there are larger, more complex shapes in shades of blue and green, suggesting a rocky or coral reef environment. The overall mood is mysterious and deep-sea.

# Phytoplankton

Phytoplankton  
El fitoplancton

What **percentage** of  
Earth's **surface** is **ocean**?

Quel **pourcentage** de la **surface** terrestre  
est **recouvert** par les **océans**?

¿Qué **porcentaje** de la **superficie** de la  
**Tierra** es **océano**?



**About 71%**  
**Environ 71%**  
**Alrededor de 71%**

**Where is the deepest  
part of the ocean?**

**Où se trouve la partie la plus profonde de  
l'océan?**

**¿Dónde está la parte más profunda del  
océano?**



# The Mariana Trench

La Tranchée des Mariana  
La Fosa de las Marianas

**What do we call when  
we catch too many fish?**

**Comment appelle-t-on le fait de pêcher  
trop de poissons?**

**¿Cómo se llama el acto de pescar  
demasiados peces?**



**Overfishing**  
La surpêche.  
E La sobrepesca





# Carbon Footprint

Empreinte Carbone  
La huella de carbono

**What are the three R's  
of sustainability?**

**Quels sont les trois R de la soutenabilité?**

**¿Cuáles son las tres erres de  
sostenibilidad?**



**Reduce, Reuse, Recycle**

**Réduire, réutiliser, recycler**

**Reducir, Reutilizar, Reciclar**

**Abyss Zone**

**Zone Abyssale**

**La zona abisal**

**Otters and starfish  
are examples of ...**

**Les loutres et les étoiles de mer sont des  
exemples de...**

**Las nutrias y las estrellas de mar son  
ejemplos de...**

# **Keystone Species**

**Espèce clé de voûte**

**Las especies clave**

# Bibliography

- Blueoceansociety.org. (2019). Creature Feature: Sea Stars – Blue Ocean Society for Marine Conservation. [online] Available at: <https://www.blueoceansociety.org/blog/creature-feature-sea-stars/> [Accessed 10 Apr. 2026].
- GWP Group. (2023). What are the 3Rs (for the environment)? Reduce, reuse, recycle. [online] Available at: <https://www.gwp.co.uk/guides/what-are-the-3rs/> [Accessed 10 Apr. 2026].
- Magazine, B.W. (2025). How deep is the deepest part of the ocean? [online] Discover Wildlife. Available at: <https://www.discoverwildlife.com/animal-facts/marine-animals/whats-the-deepest-part-of-the-ocean> [Accessed 10 Apr. 2026].
- Nps.gov. (2016). A Keystone Species, the Sea Otter, Colonizes Glacier Bay - Glacier Bay National Park & Preserve (U.S. National Park Service). [online] Available at: <https://www.nps.gov/glba/blogs/a-keystone-species-the-sea-otter-colonizes-glacier-bay.htm> [Accessed 10 Apr. 2026].
- USGS. (2018). How Much Water is There on Earth? [online] Available at: <https://www.usgs.gov/water-science-school/science/how-much-water-there-earth> [Accessed 10 Apr. 2026].
- World Wildlife Fund. (2026). Overfishing. [online] Available at: <https://www.worldwildlife.org/our-work/oceans/sustainable-seafood/wild-caught-seafood/overfishing/> [Accessed 10 Apr. 2026].

**Made by:**

**Praenuan Limvattanakul**

**Edited by:**

**Romerawin Suntaranond**

**Charisa Howe**

**Translated by:**

**Cheyenne Yeung – French**

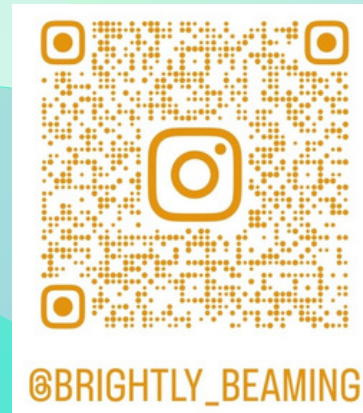
**Alexander S Morrissey – Spanish**





**@brightly\_beaming**

**[www.brighterfuture.live/brightly\\_beaming.html](http://www.brighterfuture.live/brightly_beaming.html)**





**@brightly\_beaming**

**[www.brighterfuture.live/brightly\\_beaming.html](http://www.brighterfuture.live/brightly_beaming.html)**

